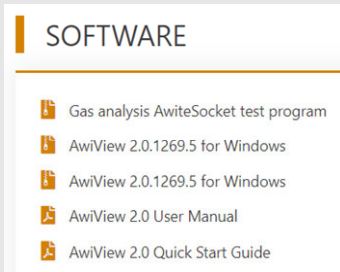




# AWIVIEW 2.0 -QUICKINFO

DOWNLOAD

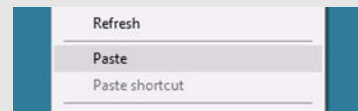
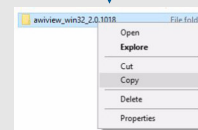
Option: AwiView via the Awite homepage



DOWNLOAD

Awiview 2.0.xxxx for Windows

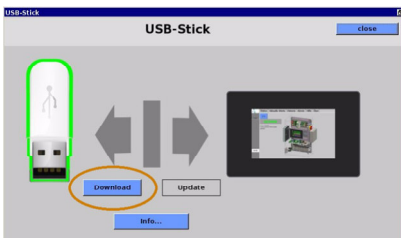
Option: AwiView on USB



Open the program with awiview2 > select language > open program again with > awiview2

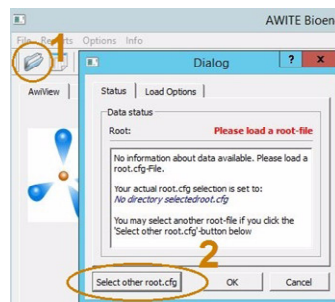
LOAD DATA

Download data directly from the device to a USB stick and then save it on the PC

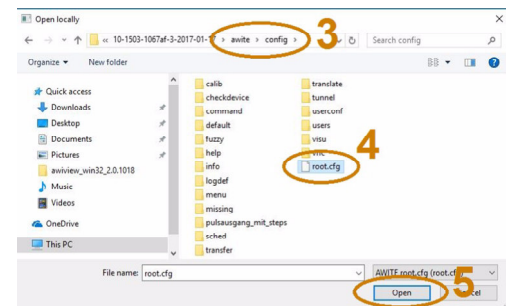


Optional: Transfer data directly from the device to the PC via a network connection (more on this in the detailed operating instructions)

The file "root.cfg" must be selected as archive in AwiView



In the directory "config" of the previously saved files, select "root" as archive



DATA DISPLAY

The loaded data can now be used to generate reports, display events or errors and show values in tables or graphs. The "Ctrl key" can be used for multiple selections. (further detailed information about all functions of AwiView can be found in the detailed operating instructions)

